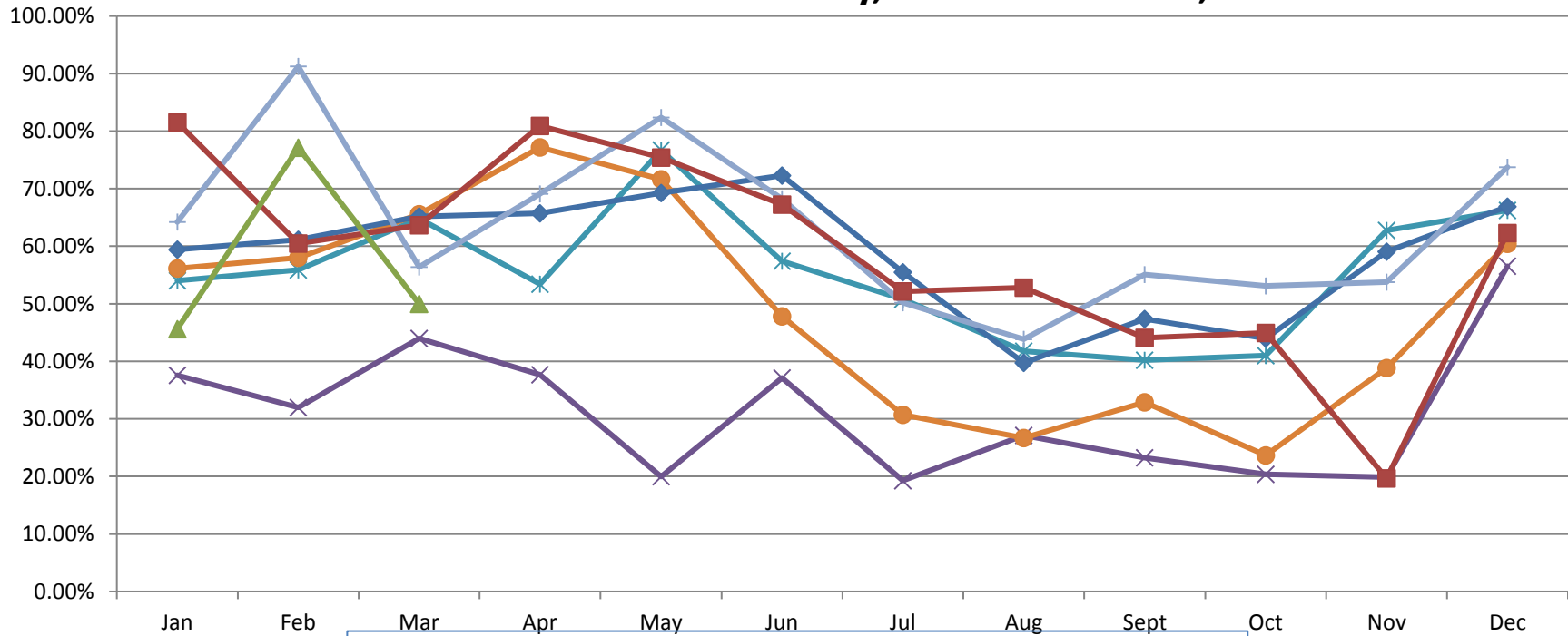


Monthly Live Release Rate for Cats

	Jan	Feb	Mar	Apr	May	Jun	Jul	Aug	Sept	Oct	Nov	Dec
2011	37.58%	31.96%	44.00%	37.68%	19.95%	37.10%	19.27%	27.15%	23.24%	20.36%	19.86%	56.52%
2012	54.01%	55.88%	64.81%	53.42%	76.70%	57.38%	50.81%	41.74%	40.21%	40.99%	62.73%	66.21%
2013	56.14%	58.02%	65.58%	77.17%	71.64%	47.83%	30.73%	26.69%	32.90%	23.67%	38.82%	60.40%
2014	59.40%	61.11%	65.18%	65.71%	69.23%	72.29%	55.47%	39.74%	47.37%	43.98%	59.05%	66.91%
2015	64.20%	91.23%	56.38%	69.12%	82.38%	68.22%	50.18%	43.84%	55.09%	53.09%	53.76%	73.74%
2016	81.51%	60.49%	63.64%	80.92%	75.42%	67.23%	52.13%	52.83%	44.07%	44.95%	19.64%	62.30%
2017	45.61%	77.12%	50.00%									

Note: Beginning in 2011, information for animals euthanized at the request of their owners is excluded from the live release calculation.

Regional Center for Animal Care and Protection Monthly Live Release Rate for Cats for January, 2010 - December, 2016



—×— 2011 —*— 2012 —●— 2013 —◆— 2014 —+— 2015 —■— 2016 —▲— 2017